

Maximeyes Introduction – Spectrum Forum



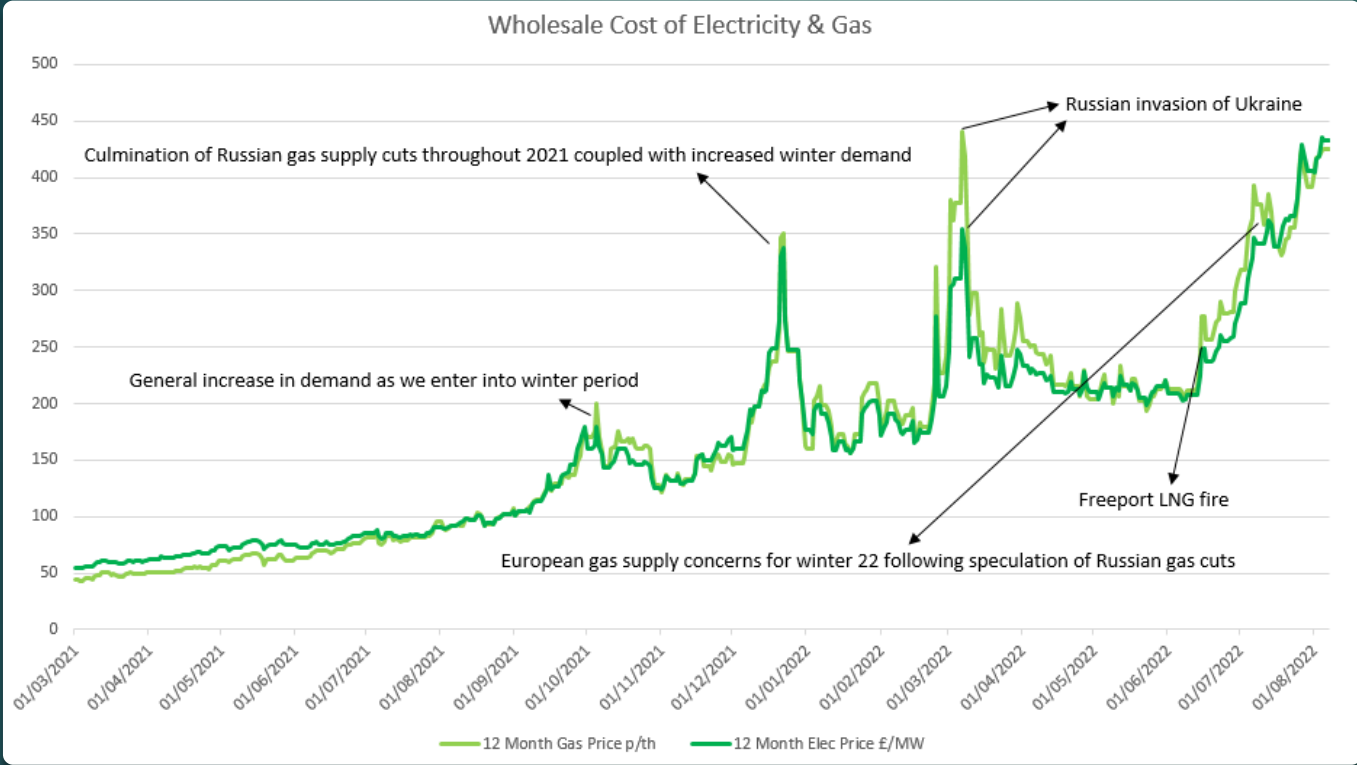
Spectrum

CARE PURCHASING NETWORK

Agenda

- ▶ Current wholesale market position
- ▶ Future Predictions
- ▶ Maximeyes Basket – How it works?
- ▶ Energy Efficiency / On-site generation
- ▶ Energy Management Tips
- ▶ Q&A



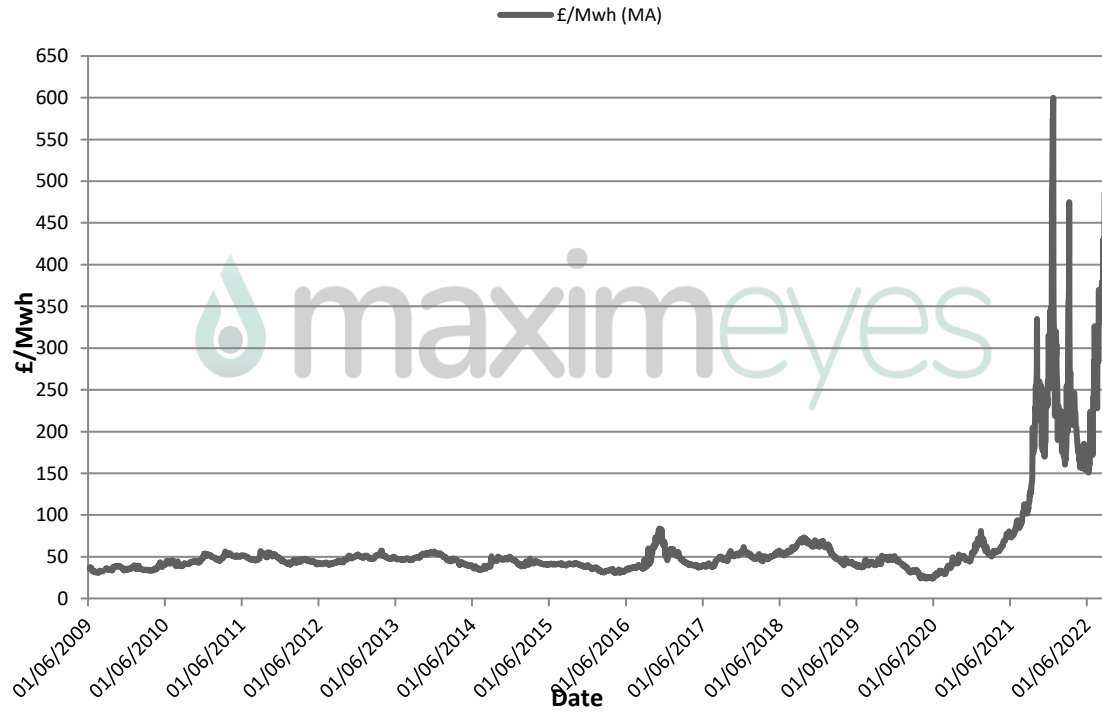


Wholesale Market graph

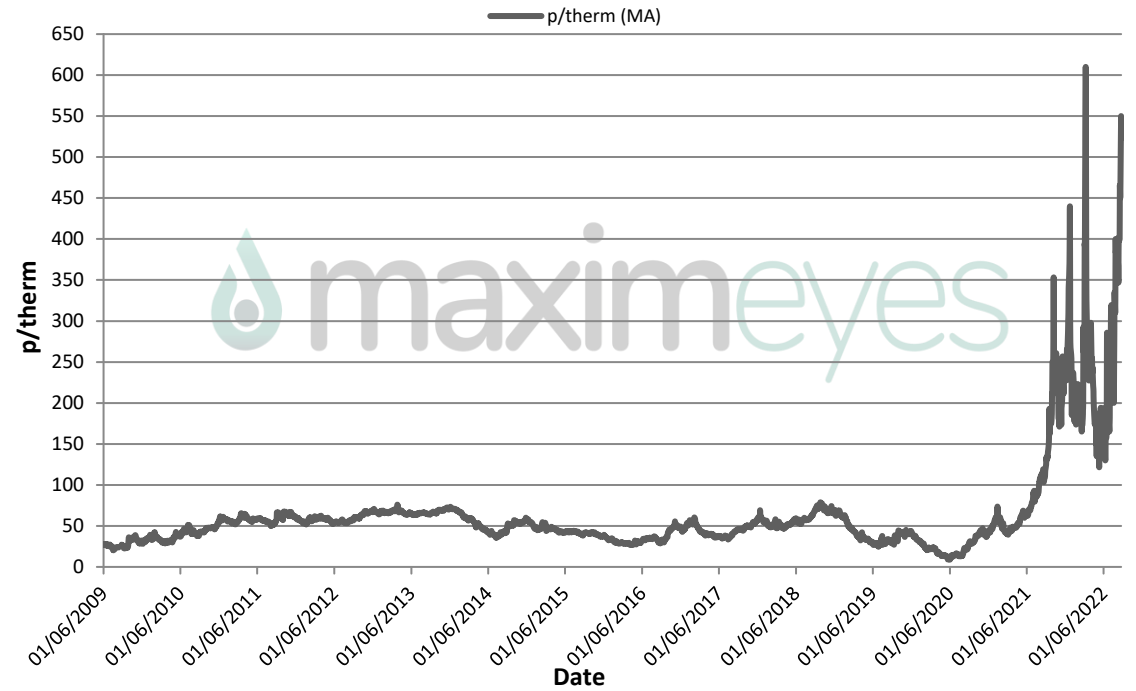
Although the wholesale market is unpredictable, many of the traders that we speak to believe, pending any further world events, that this level of wholesale costs could be seen for at least until summer 2023.

Historic Wholesale Market Movement

Elec Wholesale Price



Gas Wholesale Price

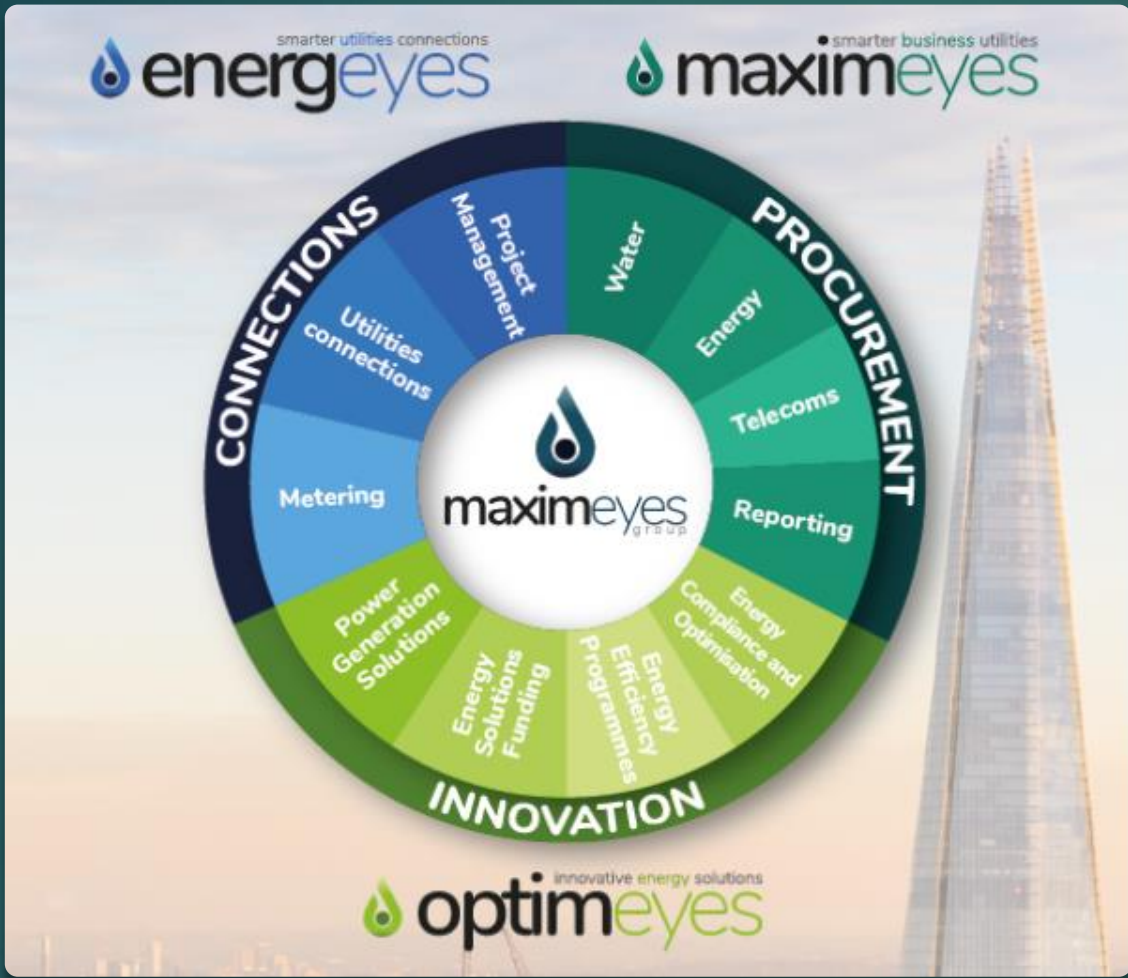


What can you do?

- ✓ Competitive tender
- ✓ Group bargaining
- ✓ Time of buying

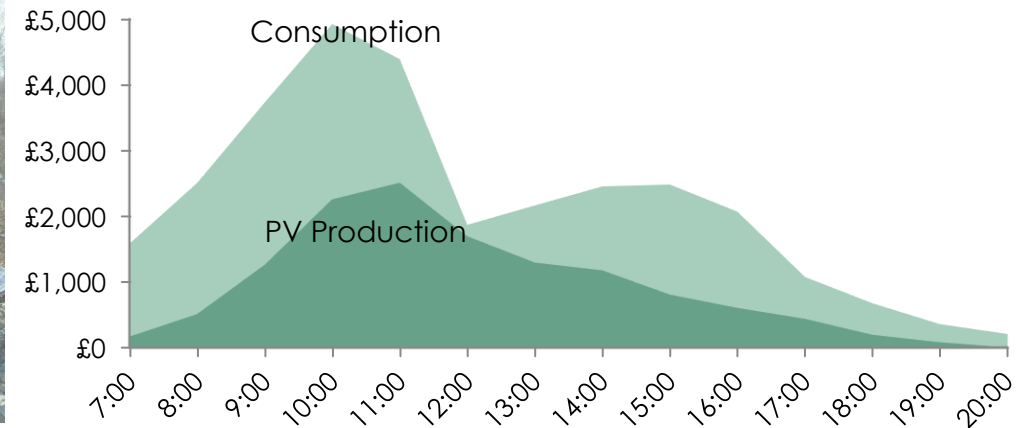
Maximeyes Basket

- ✓ Started in 2005 – running successfully for 17 years
- ✓ Group Bargaining - Care homes, Hotels, Dry Cleaners, Dental & Pharmacy Associations
- ✓ Competitive tender – 15 suppliers
- ✓ Time of buying – Track the market for min 9 months
e.g. 2020: 10 year low – action taken



Wheel of services

Solar Photovoltaic System



Benefits

- Electric is the future, and your energy consumption will go up. Use the one source of energy which is in abundance- Solar!
- Electricity tariffs may rise and fall but energy supplied from your own captive solar plant will be free- Lock in that rate now!
- Payback period has reduced from 6 years to 2.5 years and with Super Deduction it is reduced further to 2 years
- Life of a rooftop solar system is more than 25 years
- Reduce your carbon footprint (Scope 2 emissions) and make your organisation's sustainable
- Solar PV can be used to charge your battery storage and electric vehicles, reducing your need to purchase traditional grid-sourced electricity

Battery Storage



Benefits

- Backup solution in the event of power cuts, ensuring the safety of the residents
- Storage for excess solar power generated during the day, increasing green energy usage and reducing electricity costs

Optimeyes - Portfolio of services

HVAC

- Fresh air optimisation
- Exhaust fan controls
- Pump controls
- AHU optimisation
- Chiller plant control
- UPS & Server room controls

Building Envelope

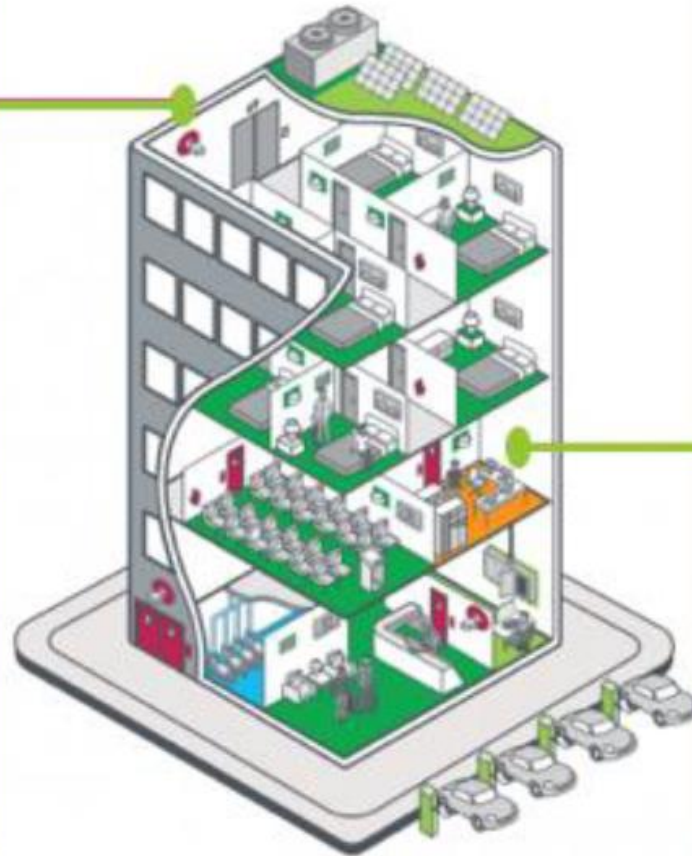
- Window thickness
- Solar films

Lighting

- LED lighting
- Occupancy controls
- Light scheduling
- Lighting power optimisation

Plumbing

- Pump optimisation



Power Generation

- Combined Heat & Power
- Biomass
- Solar PV
- Heat pumps
- Waste to Energy
- Battery storage

Power Distribution

- Voltage optimisation
- Energy monitoring
- Peak load management

Building Management

- Building automation
- Enterprise wide controls

EV Charging

- EV charge points
- Solar canopies

Energy Management Tips

- Consumption Reporting (where possible)
- Change standard bulbs to LED
- Staff behaviour training (virtually or on site)
- Regular meter readings
- Replacing older equipment (where possible)

Consumption Report Examples

Stark ID

Comparison - Day on Day - Electricity



Stark ID

Comparison - Month by Day v Previous Year - Electricity



Company:
Site:
MPAN / Meter ID:
Online Meter Name:

Laser Tradeco Limited
Mercure Oxford Eastgate Hotel
2000027359393 / K18D02708
HH 2000027359393 - K18D02708



Report For: Sun 31/07/22
Report Run Date: 15/08/22 @ 09:41:04

Company:
Site:
MPAN / Meter ID:
Online Meter Name:

Laser Tradeco Limited
Mercure Oxford Eastgate Hotel
2000027359393 / K18D02708
HH 2000027359393 - K18D02708

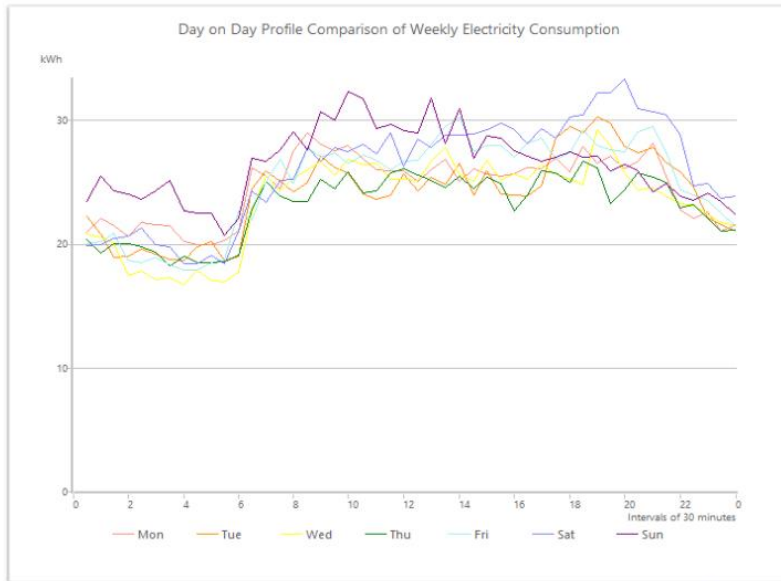


Report For: Jul 2022
Report Run Date: 15/08/22 @ 09:41:54

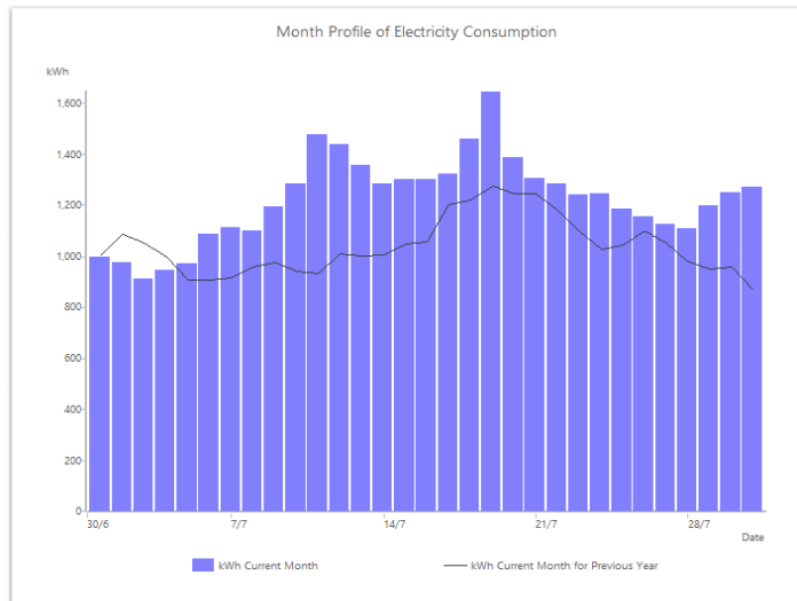
% Diff to Last Week -13.27 %

This Week			
Date	kWh	MD kW	
Mon 25/07/22	1,183	58.0	
Tue 26/07/22	1,157	60.6	
Wed 27/07/22	1,128	58.6	
Thu 28/07/22	1,112	53.5	
Fri 29/07/22	1,197	60.6	
Sat 30/07/22	1,251	66.6	
Sun 31/07/22	1,272	64.8	
Week	8,301	66.6	

Last Week			
Date	kWh	MD kW	
Mon 18/07/22	1,461	76.3	
Tue 19/07/22	1,644	88.1	
Wed 20/07/22	1,386	68.3	
Thu 21/07/22	1,305	65.3	
Fri 22/07/22	1,284	70.7	
Sat 23/07/22	1,244	60.5	
Sun 24/07/22	1,248	62.4	
Week	9,571	88.1	



Report Time Zone: (UTC+00:00) Dublin, Edinburgh, Lisbon, London (With Daylight Saving)



Day	Date	Jul 2021 (-52 wks) kWh	Jul 2022 kWh	% Diff
Fri	01/07/22	1,008.0	994.8	-1.3
Sat	02/07/22	1,086.3	973.7	-10.4
Sun	03/07/22	1,052.4	913.6	-13.2
Mon	04/07/22	996.5	947.5	-4.9
Tue	05/07/22	906.8	969.2	6.9
Wed	06/07/22	907.0	1,086.8	19.8
Thu	07/07/22	915.1	1,115.2	21.9
Fri	08/07/22	959.1	1,100.0	14.7
Sat	09/07/22	973.8	1,191.5	22.4
Sun	10/07/22	933.4	1,284.9	36.2
Mon	11/07/22	932.3	1,475.1	58.2
Tue	12/07/22	1,012.5	1,440.9	42.3
Wed	13/07/22	1,002.3	1,355.5	35.2
Thu	14/07/22	1,009.1	1,282.7	27.1
Fri	15/07/22	1,048.3	1,297.8	23.8
Sat	16/07/22	1,055.3	1,299.7	23.2
Sun	17/07/22	1,200.4	1,325.7	10.4
Mon	18/07/22	1,222.1	1,460.6	19.5
Tue	19/07/22	1,276.6	1,643.8	28.8
Wed	20/07/22	1,247.1	1,386.0	11.1
Thu	21/07/22	1,247.6	1,305.0	4.6
Fri	22/07/22	1,181.1	1,283.5	8.7
Sat	23/07/22	1,097.8	1,244.1	13.3
Sun	24/07/22	1,027.2	1,247.8	21.5
Mon	25/07/22	1,044.1	1,183.1	13.3
Tue	26/07/22	1,103.1	1,157.3	4.9
Wed	27/07/22	1,052.5	1,128.3	7.2
Thu	28/07/22	977.3	1,112.2	13.8
Fri	29/07/22	951.3	1,196.9	25.8
Sat	30/07/22	956.0	1,251.1	30.9
Sun	31/07/22	865.8	1,271.9	46.9
Total kWh		32,258.0	37,926.2	17.6
Compared kWh (Complete Data)		32,258.0	37,926.2	17.6

Q&A

Maximeyes UK Ltd

0208 652 7525

enquiries@maximeyes.me

Victoria Thomson or Ben Marshall